



B.A. Schmidt Arts & Enterprises Catalog of Tiles for 2011

B. A. Schmidt Arts & Enterprises, located in Highland Park, Illinois creates unique handmade tiles inspired by myth, nature and classic children's illustration.. Every tile is hand-made by its president and artist, Barbara Schmidt. They are perfect for both residential and commercial use. They would work beautifully in a kitchen or a restaurant, a bathroom or a spa, a child's room or a library. They would be wonderful in a Children's Hospital or a pediatrician's office. A veterinarian would love the animal tiles. The tiles mix beautifully with a wide range of commercially available field tile.

All of our tiles are porcelain and can be used both inside and out.

B.A. Schmidt Arts has over 200 different designs. Many are based on classic children's illustration. Other tiles are based on animals and sea life. Some tiles, such as the leaves use actual leaves in making the master molds. In addition, our Yoga Tile Collection, based on classic Indian textile design, won the Coverings Select Award in 2010 for the best Artisan tile.

The tiles are completely handmade. A master is first molded in clay from which a plaster mold is made. Every tile is hand pressed in the mold. After drying and bisque firing the tiles are hand painted with ceramic stains and or glazes. The tiles are then fired again to maturity to vitrify the clay body. The glazes and ceramic stains become part of the tile body and will never come off.

The images on the tiles are sculpted in three dimensional relief. The tiles are generally either 2 x 2", 4 x 4" or 6 x 6". The tiles are approximately 1/2" thick, although the thickness can vary between 3/8 to 5/8". All sizes are approximate. Unless otherwise noted in this catalog the tiles are 4 x 4" square. The tiles fit well with a wide variety of commercially available field tiles. Examples of tiles set with commercially available travertine are shown throughout the catalog. Please call for further information.

All of our tiles are available with our signature brown stain. Some of the tiles are shown with colored stains or colored gloss glazes. In addition a glass transparent glaze can be fired on top of any of the matte stains. Unless otherwise specified, the tiles are shown in our brown stain. Variations in color can occur.

Barbara is member of the Tile Heritage Foundation, the Tile Council of North American and The Handmade Tile Association.

Barbara Schmidt
B.A. Schmidt Arts & Enterprises, Inc.
128 Lincolnwood Rd.
Highland Park, Illinois 60035
847-432-5679 847-432-6921 (fax)
barbara@baschmidtartstiles.com www.baschmidtartstiles.com

Table of Contents

The Yoga Tile Collection	3
The Alice In Wonderland Tile Collection	4
The Peter Rabbit Tile Collection	5
Tiles Inspired by Walter Crane Illustrations (Classic Fairy Tale Illustration)	6-7
Fairy Tale Tiles -- Arthur Rackham and other Artists - Myth and King Arthur Tiles	8-9
Fairy Tale Tiles Inspired by the Andrew Lang Colored Fairy Books and H.J. Ford Tiles and Pre-Raphaelite tiles inspired by Edward Burne Jones Illustration and Painting	10-11
The Nursery Collection -- Tiles inspired by Jessie Wilcox Smith Illustrations, Nursery Rhymes, Fables and Toys	12
The Farm Collection - Classic Farm Life and Farm Animals -Pigs, Cows, Roosters and Horses	13-14
The Pet Collection: Cats and Dogs	14-15
The Bird Collection: Birds In Nature	16
The Sea Life Collection	17-18
Trees and Leaves	19-20
Kitchen Themed Tiles and Kitchen Installation Pictures	21
Vegetable Tiles	22
The Pond Collections - Dragonflies, Bees, Frogs, Beetles, Lizards and Grasshoppers	23



4" Rose Hand -color



4" Lotus Hand- color



4" Elephant -Brown



4" Elephant - Blue



4" Eight Pointed Star -Celadon Glaze and Brown Stain



6" Lotus Hand - color



6" Rose Hand- color



6" Elephant - Brown



6" Elephant Blue



6" Lotus Hand- Brown



6" Rose Hand - Brown



4" Ten Petal Lotus-
Celadon Glaze



4" Om Symbol

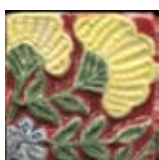


4" Floating Lotus

The Yoga Tile Collection



4 x 2" Hands- Lotus and Rose



2" Yoga Tiles--Mandala (brown stain), Flowers with Red and Blue backgrounds, Left and Right Hands in brown stain, Celadon Elephant and Om Symbol in brown stain.



White Rabbit as Card



Alice & Queen of Hearts



Cheshire Cat



Alice and Pig



Tweedles



Alice & White Rabbit



Painting the Roses



Mad Hatter



Alice and Caterpillar



Alice & Flamingo (color)



White Rabbit Watch



Alice & the Key



The Alice In Wonderland Tile Collection

These tiles are based on the illustrations by **John Tenniel** (British, 1820 -1914) for **Lewis Carroll's** *Alice's Adventures in Wonderland* (1866).

These tiles are shown in our matte brown stain and in colored matted stains.



Peter & Mother (color)



Flopsies & Mother (color)



Peter Under Fence (color)



Peter & Carrots (color)



Peter & Mr. McGregor (color)



Peter Running (color)



Peter In Bed



Flopsies & Berries



Peter & Carrots



Peter Under Fence



Jemina Puddleduck (color)



Samuel Whiskers (brown)

The Peter Rabbit Collection

These tiles are based on **Beatrix Potter's** (British, 1866 – 1943) beloved illustrations for *The Tale of Peter Rabbit* and other stories. These tiles are shown in our matte brown stain and in colored matted stains/



Colored Peter Rabbit tiles shown installed on a concept board with 4 x 4" travertine field tile.

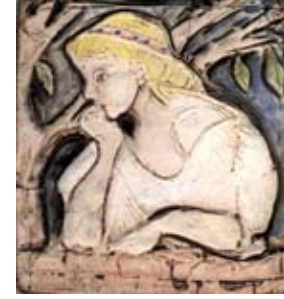


Red Riding Hood and Mother



Tiles Inspired by Illustrations by Walter Crane

Walter Crane (British, 1845–1915) was considered to be the most prolific and influential children's book illustrator of his generation. He was also a member of the Arts and Crafts movement and collaborated with **William Morris**, one of the founders of the Arts and Crafts movement. These tiles are shown in our matte brown stain and in colored matted stains.



Snow White



Red Riding Hood Picking Flowers



Pandora



Princess Bathing



Gretel on Duck



Red Riding Hood and Wolf



Man and Flute



Spinning-Rumpleskilt



Embroidery-Snow White



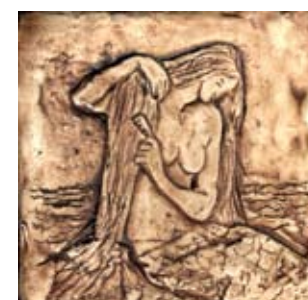
Wolf In Bonnet (Gustave Dove)



Mermaid 1



Mermaid 2



The Reaper



Jack & the Bean Stalk



Doe in Forest 6 x 6 "



Prince in Forest 4.5 x 6 "



Princess Galloping 6 x 6 "



Horse Lord 6 x 6 "



These two concept boards show the brown stained and the colored Red Riding Hood tiles shown installed with 4 x 4" travertine field tile



Geese on Parade -The Goose Girl 4 x 8"



The Magic Fish 6 x 6 "

These tiles are inspired by illustrations by **Walter Crane** for *Jack and the Beanstalk* (1874), *Little Red Riding Hood* (1875), *The Household Stories of the Brother's Grimm* (1882), *The Wonder Book* (1892), *The Fairie Queen* (1894-1896), and *Line and Form* (1900), The Wolf in the Bonnet tile is based on a 1867 illustration by French Engraver, **Gustave Dore** (1832-1883).



Mermaid



Danae and Perseus



Moon Goose



Viking Ship



Lion

Tiles Inspired by illustrations by Arthur Rackham

The Moon Goose, the Mermaid, the Viking Ship and the Lion Tiles were inspired by **Arthur Rackham's** minor black and white illustrations for *The Romance of King Arthur and His Knights of the Round Table* by Alfred Pollard first published in 1917. **Rackham** (British, 1867-1939) was a book illustrator most famous for his children's book illustration.

The Danae Tile was inspired by a 1903 illustration.



Merlin Tile

The Merlin Tile is inspired by an 1893 **Aubrey Beardsley** (British, 1872-1898) illustration for the Malory's *Le Morte D'Arthur*.



Dragon Tile 4 x 4"

This tile is inspired by an image designed by Arts and Crafts Tile maker **William De Morgan** (British, 1839-1917). De Morgan worked with **William Morris**.



Humpty

Inspired by an illustration by **Sir John Tenniel** for Alice Through the Looking Glass



Pan

from an 19th Century Bookplate



Muse

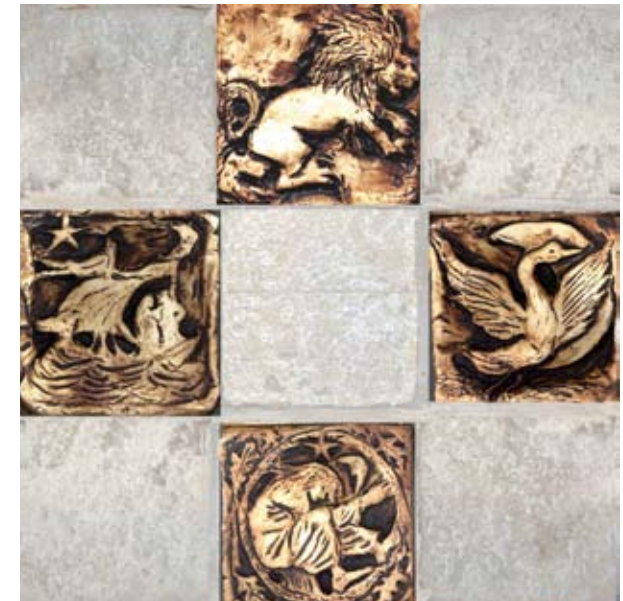
from an Art Deco Bookplate



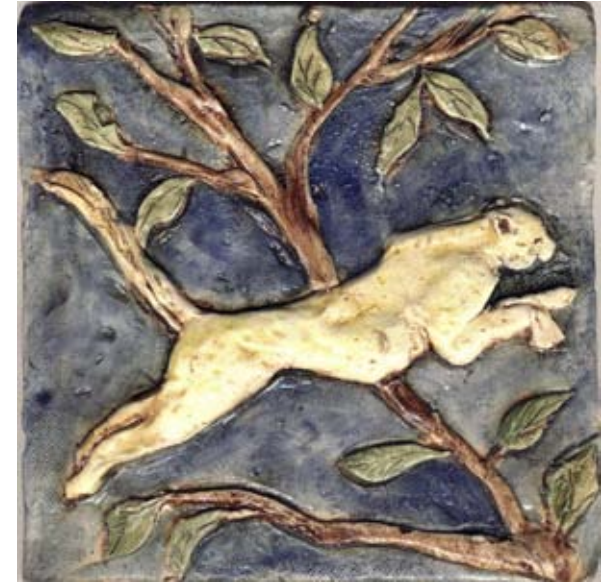
Garden Man -

From an Art Deco Design

Fairy Tale Tiles -- Arthur Rackham and other Artists - Myth and King Arthur Tiles



William Morris (24 March 1834 – 3 October 1896) was an English designer, artist, writer, associated with the Pre-Raphaelite Brotherhood and the English Arts and Crafts Movement.



Dragon Tiles 6 x 6 “ Shown in Colored Stains and in Brown Stain
This tile is inspired by an image designed by Arts and Crafts Tile maker **William De Morgan** (British, 1839-1917) .
De Morgan worked with William Morris.

Cheetah 6 x 6”
A tile by **Barbara Schmidt** in the style of William De Morgan - shown in colored stains



Pegasus 6 x 6”
Inspired by Greek Mythology

Cow Over Moon 6 x 6 “
Inspired by the Nursery Rhyme

Frog On Lily Pad -
From an illustration by **M. P. Verneiuill** (French 1869-?), who was influential in both the Art Nouveau and Art Deco movements



The Princess Waiting -- Two 6 x 6 x" tiles inspired by an illustration by **H.J. Ford** for **Andrew Lang's** *The Crimson Fairy Book* published in 1903.

Fairy Tale Tiles Inspired by the Andrew Lang Colored Fairy Books

Andrew Lang (31 March 1844 – 20 July 1912) was a Scots poet, novelist, and literary critic, and contributor to the field of anthropology. He is best known as a collector of folk and fairy tales. He published a number of "colored" fairy tale books between 1890 and 1912 - many were illustrated by some of the best illustrators of the time, including **Henry Justice Ford**, whose illustrations inspired a number of the tiles in this collection.

Henry Justice Ford (H.J. Ford) (British, 1860-1941) is most famous for his illustrations in the Lang colored fairy books. He was influenced by the Pre-Raphaelite artists and was friends with **Sir Edward Burne-Jones**, one of the most famous Pre-Raphaelites.

Frank Godwin (American, 1889-1959) illustrated children's books and comic strips. In 1921 he was commissioned to illustrate a new edition of Lang's *Blue Fairy Book*.



The Ship Arrives --Two 6 x 6 x 1/2" tiles inspired by an illustration by **Frank Godwin** for a 1921 Edition of **Andrew Lang's** *The Blue Fairy Book*.



4 x 8 x 1/2" Angel tiles inspired by a painting by **Sir Edward Burne-Jones**. Shown in brown stain and red glaze



"The Kiss That Gave the Victory" - based on a 1903 illustration by **H.J. Ford** for **Andrew Lang's** *The Crimson Fairy Book* -- approximately 6 x 6 x 1/2"



A smaller 4 x 4" version of the "Kiss" tile



Sisters-based on a 1901 illustration by **H.J. Ford** for *The Violet Fairy Book*. 4 x 4 x 1/2"

H.J. Ford Tiles and Pre-Raphaelite tiles inspired by Sir Edward Burne-Jones Illustration and Paintings



The Treatise on the Astrolabe tile is based on **Burne-Jones's** illustration for Morris' Kelm-scott Chaucer.



4 x 4 Angel Tile
This Angel Tile is also inspired by a painting by **Sir Edward Burne-Jones** (British, 1833 – 1898) was closely associated with the Pre-Raphaelite movement. He was friends with illustrator H. J. Ford. He also became a partner in **William Morris's** company which produced decorative arts.



Rapunzel Tile-Based on a 1890 illustration by H.J. Ford for **Andrew Lang's** *Red Fairy Book*.



Woman & Baby-Based on an 1890 H.J Ford illustration for **Andrew Lang's** *Red Fairy Book*.



Knight -based on a Ford illustration for a **Lang Fairy Book**.



The Ugly Duckling
From a 1910 illustration by **Margaret Tarrant** (British, 1888–1959).



Rubber Duckie -
also available with cobalt back-ground



Cow Over Moon
Inspired by the Nursery rhyme



The Hare & the Tortoise
From a 1919 illustration by **Milo Winter** (American 1888-1956)



Happy Duckie -
Glazes



Sarah Reading -A tile by **Barbara Schmidt** in the style of Jessie Wilcox Smith 4 x 4 x 1/2"



Boy Reading-based on a 1920 illustration by **Jessie Wilcox Smith** for Good Housekeeping



Saying Grace-- based on a 1905 illustration by **Jessie Wilcox Smith** for *A Child's Garden of Verses*.



Boy on Shore --based on a 1905 illustration by **Jessie Wilcox Smith** for *A Child's Garden of Verses*. (brown and color glaze)



Boy & Tulip- based on a 1919 illustration by **Jessie Wilcox Smith** for Good Housekeeping (glazes)



Girl at Shore- on a 1918 illustration by **Jessie Wilcox Smith** for Good Housekeeping (glazes)



Children Reading - based on a 1905 illustration by **Jessie Wilcox Smith** for *A Child's Garden of Verses*.



Rain Rain Go Away-based on a 1914 Jessie Wilcox Smith illustration

Jessie Wilcox Smith (American, 1863-1935) was a student of Howard Pyle, She was famous for her work in magazines such as Good Housekeeping and for her illustrations for children's books such as Robert Louis Stevenson's *A Child's Garden of Verses* and *Mother Goose*.

The Nursery Collection



Milk Maid (1905)
Jessie Wilcox Smith's *A Childs Garden of Verses*

***The Farm
 Collection
 Classic Farm
 Life and Farm
 Animals
 Pigs, Cows &
 Roosters***



The Reaper- based on a 1900 illustration by **Walter Crane**
 for *Line and Form*



The Sower - based on a painting by **Jean-François Millet** (French, 1814 –1875).



Subway Sized Pig-- approximately 3 x 6"- sized to fit with popular subway size tiles. Also available in cobalt and pink, and white glazes



Walking Pig



Happy Pig



Curious Pig



Walking Pig - color glazes



Happy Pig -Color glazes



Curious Pig- color glazes



Cow Resting



Cow Standing Right



Cow Standing Left



Cow Resting -
 color glazes



Cow Standing Right
 Color glazes



Cow Standing Left
 color glazes



Rooster Right-
 color glazes



Crowing left-
 blue/red/white glazes



Rooster Running-
 blue/red/white glazes



Crowing right
 multi color stain



Rooster Flapping-
 multi color stain-



Rooster left



Cow Resting - 6 x 6" brown stain



Rooster Right 6 x 6" Multi color glazes



Rooster Right 6 x 6" Multi color stains

***Farm
Animals,
Horses &
Cats***



Cat Looking Forward



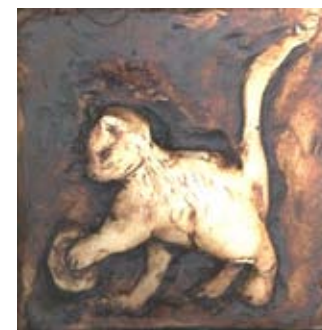
Cat Washing -Brown stain



Mouse - Brown stain



Three Cats - Brown Stain



Cat & Ball



Large Cow Approximately 5 x 7"



Horse Prancing



Horse Galloping



Horse Rearing



Horse Trotting



Beagle



Great Dane



Huskie



St. Bernard



St. Bernard (color glazes)

The Pet Collection *Cats & Dogs*



Cat Sitting



ScaredyCat



2" Cat Profiles -Right and left
Brown Stain



Cat Curled



Cat Sleeping



Cat with Tag (6 x 6")



Cats at Window (6 x 6")



Cats at Window - matte colored stains (6 x 6")



Robin (colored matte stains)



Jay or Cardinal



Bird In Nest



Bird Flying



Sea Gull (a De Morgan Design)



Cardinal - gloss glazes



Bird in Garden -- 8 x 4" in brown stain and in colored stains --Tile is based on a design by M. P. Verneuil (French 1869-?), who was influential in both the Art Nouveau and Art Deco movements



Swan Swimming- gloss glazes



Hummingbirds and Flowers 6 x 6" matte colored stains



Woodpecker 6 x 6" -Based on a tapestry design by William Morris



The Bird Collection



De Morgan Fish Profile



De Morgan Fish Left



De Morgan Fish Right



De Morgan Fish Left-Blue Stain



De Morgan Fish Right-Blue Stain

These tiles are based on images designed by William De Morgan (British, 1839-1917). De Morgan designed tiles for William Morris and often based on medieval designs and Persian motifs. Fish were one of his most popular designs.



Fish and Seaweed -- 8 x 4" Shown in colored stains with brown background and colored stains with blue background. Tile is based on a design by M. P. Verneuil (French 1869-?), who was influential in both the Art Nouveau and Art Deco movements.



De Morgan Fish Left 6 x 6" gloss glazes

The Sea Life Collection



Conch Shell -gloss glazes Sea Horse -gloss glazes
available also in matte brown stain



De Morgan Fish Left 6 x 6" shown with 2" travertine field tile
Conch and Sea Horse shown with travertine field tiles.



Swirl Fish Tile 1- Available with second tile that mirrors this one to create a border or panel - see concept board at left- Each tile is approximately 6 x 6" . Shown in gloss white glaze (above) or brown matte stains.



Medieval Fish- 8 x 4" - based on a Medieval English design



Fish in Circle -left



Fish in Circle-right



Fish 1



Fish 2



Fish 3



Fish 4



Fish 7



Grape Leaves 1 4 x 8"



Grape Leaves 2 4 x 8"



Ginkgo Leaf



Elm Leaf



Oak Leaf 1 with green



Oak Leaf 2



Tree with no leaves



2" Elm 1 green



2" Elm 1



2" Elm 2



2" Elm 2 green



2" Weed -green



2" Acorn



2x4" Elephant Ear-green & brown



3" Maple -green



3" Maple-Fall colors



3" Oak- Fall colors



3" Oak Green



3" Tree & Roots



3" Tree & Roots-color



Maple Leaves and Seeds 8 x 4"



4" Sunflowers
top - matte colored stains
bottom-colored gloss glazes



3" Japanese Maple-green

The Trees and Leaves Collection



Tree Sunrise 6 x 6"

This tree is an homage to a tree that I loved in my parents backyard. We sold the house after my Mother's death and the new owners chopped this wonderful tree down.



Tree Mural--This 12 x 12" mural (nine 4 x 4" tiles) of a sprawling tree with roots was inspired by a tree that I grew up with. After my parents had passed away and we sold the house, the new owners cut down this wonderful tree. This mural is homage to that tree. It is shown here with a brown fired on stain finish, or with a colored fired on stain finish. On the left, the mural is shown installed on a bench that was shown in the Tile Council of North America's courtyard at the 2011 Coverings trade show in Las Vegas, Nevada. The tiles are installed on a Wedi board base. The bench, along with 11 other benches by TCNA members was donated to Opportunity Village, a local Las Vegas charity that serves persons with intellectual disabilities.



Cup and Saucer Tile



Teapot 1



Teapot 2



Teapot 3 gloss glazes



Coffee Mug



Jack Sprat- inspired by a 1915 illustration by **Frederick Richardson** (American, 1862-1937)



Polly Put the Kettle/Hot Cross Buns inspired by a 1918 **Jessie Wilcox Smith** illustration.



Kitchen Installations



Baker's Man -Inspired by a 1916 illustration by **Blanche Fisher Wright**



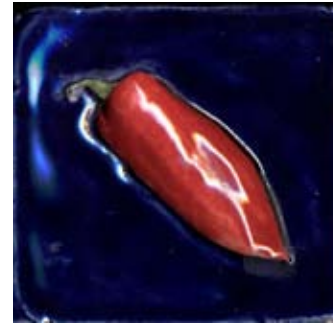
The Kitchen Collection



4" Asparagus Tiles -Brown and green stain and white glaze and green stain



Curved Pepper-red on cobalt



Fat Pepper- red on cobalt



Fat Pepper-Orange on cobalt



2 x 4" Pepper Red on Cobalt



Pea Pods- Green on Cobalt



Mushrooms



Three Peppers- red on brown stain



Okra- Green stain on white glaze



Curved Pepper- green on white



2 x 4" Pepper green on cobalt



Grapes -colored stains



Asparagus 6 x 6" Vertical green on white glaze and green on brown stain



Asparagus 6x 6" Diagonal green on White Glaze



The Vegetable Collection



Pea Pod 4 x 2" green on white



2" Pepper green on cobalt



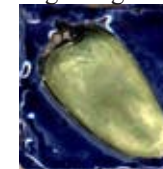
2" Cherry-red on cobalt



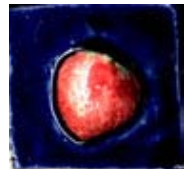
2" Pepper-red on cobalt



2" Cherry-red on brown



2" Pepper



2" Strawberry



Dragonfly -

Light Brown Background and Dark Brown Background



Bee-

Light Brown Background and Dark Brown Background



Frog -

Green on Brown Stain



Grasshopper

-green on brown stain



2 x 4" Lizards -

Brown stain and orange on dark



2" Beetles-

Green on Dark brown, Red on Light Brown & Brown Stain



4 x 2" Frog

-Green on Brown Stain



2" Dragonfly



2" Striped Beetle

Green on Brown Stain



2" Frogs - Brown Stain and Green on Brown Stain



The Pond Collection

Dragonflies, Frogs, Bees & Lizards



Frog On Lily Pad - Inspired by an illustration by M. P. Verneiuill