



# B. A. Schmidt Arts

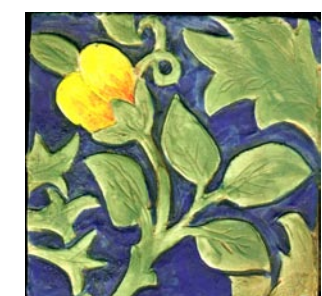
## New Tiles

### 2012-2013

*Extraordinary Handmade Porcelain Tile*

B.A. Schmidt Arts  
Barbara Schmidt, President and Artist  
128 Lincolnwood Road  
Highland Park, Illinois 60035  
[www.baschmidtarts.com](http://www.baschmidtarts.com)

847-432-5679 847-432-6921 (fax) 847-331-6183 (cell)  
[barbara@baschmidtartstiles.com](mailto:barbara@baschmidtartstiles.com)







The 4 x 4" Fox, Hare and Raven Tiles, shown in color and in brown fired on ceramic stains. Inspired by the 1895 Forest Tapestry of William Morris which now hangs in the Victoria and Albert Museum. The tiles are 4 x 4" Porcelain. They are available in fired on color stains or brown stains.  
**Created 2012**







The Raven inspired by Morris's Forest Tapestry in cobalt blue glaze (shiny). 2012



Inspired by Morris's Forest Tapestry this two tile Peacock is 4 x 8" (Two 4 x 4" tiles). Shown in matte fired on ceramic stains.

**Created 2013**





Inspired by Morris's Forest Tapestry this two tile Lion is approximately 6 x 9". As I made one very large mold, I can cut the lion to various sizes, such as a 4 x 4 head, or a 6 x 6 front part of the lion, or a 4 x 8 top part of the lion. Shown in matte fired on ceramic stains. -- **Created March 2013**





Inspired by the Woodpecker Tapestry created by William Morris for the Arts & Crafts Exposition of 1898 these colorful 6 x 6" porcelain tiles would look beautiful around a fireplace, on a garden wall. Woodpecker (top) and Yellow Bird (bottom) -- Each approximately 5 5/8" square. Shown here surrounded by 2" taverine field tile. **Created 2012**





These floral tiles were inspired by the William de Morgan and William Morris designs. The carnations and the Sunflower tiles are all variations of William de Morgan designs from the late 19th Century. De Morgan was a tilemaker and potter who worked closely with William Morris. The single flower is derived from William Morris' Artichoke wall paper. Each tile is 4 x 4" and can be prepared with a variety of glazes and colors. The sunflowers can be rotated in various ways to create patterns, as shown above. The carnations work well as a two tile display. **Tiles created in 2013.**



Tiles Inspired by Illustrations from the Golden Age of Fairy Tales. The late 19th and early 20th Century brought new technologies t□

Andrew Lang published twelve “coloured” fairy books, many illustrated by Henry Justice (H.J.) Ford.



Princess Waiting Mural, inspired by an illustration by H.J. Ford for the *Crimson Fairy Book* published in 1902. Each image is two 6 x 6” porcelain tiles. Shown surrounded by 2” travertine field tile. **Created 2012**





The Princess Waiting Murals in color and the The Princess and the Birds, also inspired by an illustration by H.J. Ford from the 1902 Andrew Lang Crimson Fairy Book. Each mural is composed of two six inch porcelain tiles. The color stains are fired on and will not come off. The Princess and the Birds is also available in brown stain, **Created 2012**





New 4 x 4" tiles for the Alice and Peter Rabbit collections. Alice and the Cards is inspired by John Tenniel's illustration for *Alice in Wonderland*. The Alice with the Chess Crown and the Alice In the Looking Glass are inspired by Tenniel's illustrations for *Alice Through the Looking Glass*. The Peter Gets the Boot tile is inspired by a Beatrix Potter's illustration for *Peter Rabbit*. **Created 2012**





The Tea Party -- based on John Tenniel's illustration for Alice In Wonderland. First created in 2008 -- first shown at Coverings 2013.





Six Inch Happy Elephant -- A new addition to our award winning "Yoga Tile" Collection . First shown at 2012 Coverings -- created 2011.





Bench created for the Tile Council of North America's Court Yard at the 2013 Coverings Stone and Tile Trade Show in Atlanta, Georgia. After Coverings, the bench will be on display at the TCNA's headquarters in Anderson, South Carolina.



The bench is on Wedi board and can be used in wet areas. My decorative tiles are surrounded by travertine field tile. I can customize the bench with any of my tiles. Call for details.





Bench created for the Tile Council of North America's Court Yard at the 2012 Coverings Stone and Tile Trade Show in Orlando, Florida. The bench was to be displayed at TCNA headquarters, but was stolen off the trade show floor at the conclusion of the show.

The bench is on Wedi board and can be used in wet areas. My decorative tiles are surrounded by travertine field tile. I can customize benches with any of my tiles. Call for details.